



The Labrador Retriever Club of the Pioneer Valley, Inc.  
April 2012

**2011-2012  
Board of Directors**

**OFFICERS**

President

Lois Engel

[showdogs@charter.net](mailto:showdogs@charter.net)

413-323-7672

Vice President

Gretchen Boss

[cgnbboss@yahoo.com](mailto:cgnbboss@yahoo.com)

413-736-5606

Treasurer

Laura Lafreniere

[westhilllabs@aol.com](mailto:westhilllabs@aol.com)

413-623-5055

Recording Secretary

Laura Bauver

[cassiscloset@yahoo.com](mailto:cassiscloset@yahoo.com)

413-357-6424

Corresponding Secretary

Judi Dorsett

[judedors@aol.com](mailto:judedors@aol.com)

413-265-6987

**MEMBERS-AT-LARGE**

Ann Burns

[paddington@charter.net](mailto:paddington@charter.net)

508-248-3618

Lauren Simpson

[laughinlab@comcast.net](mailto:laughinlab@comcast.net)

417-734-7613

Tina Stone

[chritinestone@comcast.net](mailto:chritinestone@comcast.net)

860-454-8025

Annmarie Wilson

[annmarie@wilannlabradors.com](mailto:annmarie@wilannlabradors.com)

860-668-4908

Newsletter Editor

Laura Bauver

[cassiscloset@yahoo.com](mailto:cassiscloset@yahoo.com)

413-357-6424

Webmaster

Annmarie Wilson

[annmarie@wilannlabradors.com](mailto:annmarie@wilannlabradors.com)

860-668-4908

# ANNUAL MEETING *and* AWARDS BANQUET

*Saturday, April 21, 2012*

*Annmarie Wilson's Home  
6 Dara Lane Suffield CT*

*6 pm Social Hour*

*7 pm Pot Luck Dinner*

*Annual Meeting followed by Award Presentations*

Please RSVP to Laura Lafreniere

[westhilllabs@aol.com](mailto:westhilllabs@aol.com)

to let her know what you are bringing for the dinner

**GUESTS AND PROSPECTIVE MEMBERS  
ENCOURAGED TO ATTEND**

This newsletter is e-mailed to all LRCPV members at no fee. Newsletter subscriptions to non-members are \$15.00 per year. Club activity or committee reports, editorial, or general articles of interest to Labrador Retriever owners are always welcome. Any opinions or reports contained herein are those of the authors and do not necessarily reflect the opinion of the Membership, Board of Directors, or the editors.

Please address all correspondence to the Editor at:

Newsletter Editor, LRCPV

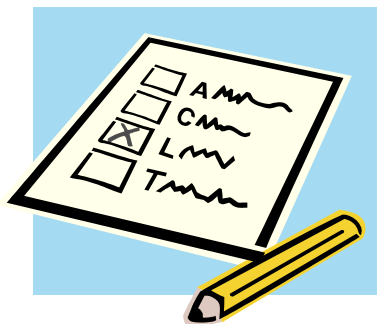
Laura Bauver, 43 South Lane, Granville MA 01034

Email: [cassiscloset@yahoo.com](mailto:cassiscloset@yahoo.com)

The purpose of this newsletter is to give members of LRCPV an overview of club activities and to keep them informed on breed related issues. The newsletter is published monthly.

Labrador Retriever Club of the Pioneer Valley, Inc. does not guarantee or endorse products or services advertised in the club's newsletter.

[www.lrcpv.org](http://www.lrcpv.org)



### NOMINATING COMMITTEE

The Nominating Committee has selected the following slate for 2012-2013:

#### Officers

- President Lois Engel
- Vice President Gretchen Boss
- Treasurer Laura Lafreniere
- Recording Secretary Laura Bauver
- Corresponding Secretary Judi Dorsett

#### Board Members

- Laura Cook
- Lauren Simpson
- Tina Stone
- Annmarie Wilson

There were no nominations from the floor at the March Business Meeting. Election will take place at the Annual Meeting in April.

#### 2012 Nominating Committee:

Laura Bauver, Chair  
 Pam Burek  
 Laura Cook

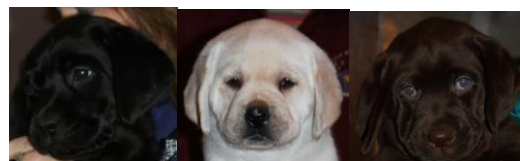
### West Hill Paws

Dog Cushions & Crate Pads

Decorative Fabrics  
 Sewn with 2 thick layers  
 of polyester batting

Machine Washable!

Laura Lafreniere  
413-623-5055
LLafren@aol.com



### PUPPY PEN

If you have a litter of Labrador Retriever pups you would like to list in our newsletter and/or on the website, please review Rule 11 in the club Rules & Policies (available in the member section of the website). Laura Lafreniere must receive confirmation of required clearances prior to publication.

If you have any further questions, please contact Laura Lafreniere, Laura Bauver, or Annmarie Wilson.

### ADVERTISING

The Board of Directors has established new advertising opportunities for members of our Club. Ads may not be political, but do not have to be dog related.

#### Newsletter:

Business Card\* (2"X3.5") \$25/Club Year  
 Fee will be prorated for partial Club Year (\$2.50 per remaining month)

\*You may also purchase larger ads  
 4'X3.5 for \$50/yr. 6" X 3.5" for \$75/yr. etc.

There will be a minimum of  
 10 newsletters/year

Contact Laura Bauver for more information

#### Website:

\$100/Club Year

\$50/Club Year for members in good standing who have worked at least four (4) hours each at two events in the prior Club Year, as verified by the event chairperson

Fee will be prorated for partial Club Year (\$10/\$5 per remaining month)

Contact Annmarie Wilson for more information

***Labrador Retriever Club of the Pioneer Valley, Inc. does not guarantee or endorse products and services advertised in the Club's newsletter or on the website.***



**WillowTree Naturals**

**where dogs with the heart of a wolf shop.**

**We now carry the largest selections available for feeding a naturally raw or cook-your-own diet for your best friend.**

**BRAVO – K-9 KRAVINGS – VITAL ESSENTIALS – OC  
RAW – PERFORMANCE DOG  
PETCUREAN Now 25# bag \$55 with ad**

**The best choices in holistic nutrition  
WillowTree Farm Store Belchertown MA  
413-323-7672 showdogs@charter.net**



## ASK THE VET

### **Dew claw removal in Labrador Retrievers: What are the pros and cons?**

**Pro:**

The most common reason for removal of dew claws is cosmetic. In the show dog in a stacked position, there is a cleaner line to the inner leg when the dew claw has been removed properly.

In addition, when we see toe nail injuries, the dew claw is the most common culprit. It gets snagged on shrubbery, or broken when the leg breaks through the ice, catching the dew claw. These injuries, of course, don't occur in the absence of dew claws.

Finally, in dogs that jump up and "hug" their owners, or bat at them with their front legs, the dew claw can sometimes be the source of painful scratches to a person that is careful to avoid the digital claws

**Con:**

Removing dew claws is painful. Granted the puppies seem to recover quickly and act normally within a short time. But logic tells us that you can't remove a digit and not have it hurt.

Unless done at home by the breeder, dew claw removal by a veterinarian can be expensive. There is a chance for infection or unsightly scar formation. When done properly this is uncommon, but I have seen some ugly outcomes.

Some hunters feel that dew claws may help Labradors scramble up stream banks or scramble over rocks.

My personal belief is that any perceived slight improvement in appearance is outweighed by the discomfort facing the little puppies. But as you can see, there are sensible arguments on each side.

-Ann Huntington, DVM

### **What are the differences –good and bad-- of titer testing vs. regular vaccines?**

Regular vaccines for distemper and rabies are advised at three year intervals; no longer every year.

Vaccine titers have value in certain situations:

- Some dogs do not get an increase in antibodies from a vaccination and titer testing can identify them.
- Duration of immunity from vaccines is long especially with modified live vaccines. DOI of many vaccines has not been studied beyond 3 years so it would be a gamble to go more than 3 years and titer testing may help.

### Limitations of titer testing:

- What a lab calls “protective” is questionable. Techniques and titers differ from lab to lab.
- Titrers ignore some types of immunity—cell-mediated and memory cells-- so they only tell part of the story. Titrers tell only antibody levels. A high titer means dog is protected but a low titer can mean protected or not protected.
- Titrers are not accepted at many boarding kennels.
- Titer testing is more expensive than regular 3 year vaccines.

### **Caution rabies titers:**

Rabies titers are often required for international travel health certificates. But in the US if there is a rabies exposure, public health will require proof of proper vaccination. Rabies vaccine is a public health vaccine. It not only protects your dog but also people and other animals. Only regular rabies vaccination is legal at this time.

In the AAHA 2011 Canine Guidelines state titer testing is useful to monitor immunity to canine distemper, canine parvo virus, canine adeno virus and rabies virus. These tests also ensure that a dog responds to a specific core virus vaccine and to determine if immunity is present in a previously vaccinated dog.

- Hazel Holman, VMD



## **OBEDIENCE/RALLY**

### New Rally Sign – A Tale of Two Jumps

There's a lot of confusion about how to execute the new jump exercise that's being introduced in April, so here's an explanation of how each of the jump exercises should be performed. The existing jump exercise, applicable in Advanced and Excellent classes, is the “Send Over Jump, Handler Passes By” sign. It's new number is 103, but to those of you who have been competing in Rally for a few years will know it by the old number 34. Nothing about this existing exercise has changed, other than the sign number. When done correctly, the dog drifts to the left away from the handler to go over the jump as the handler passes by the right side of the jump, then the dog returns to heel position as both dog and handler keep moving forward. Both dog and handler should move forward together, preferably at the same rate of speed, so as to prevent the dog from getting far ahead of or behind the handler (resulting in an out-of-position deduction). The new jump exercise is sign number 210 and is simply titled “Send To Jump”. It's not as complicated as it may seem after reading the way it's written in the regulations. Dog & handler approach the jump in the exact same way as is done for sign 103, except that the handler sends the dog ahead to take the jump from at least 3 feet in front of the jump. Once the dog clears the jump, it should immediately come around the end of the jump and rejoin the handler at heel position (the handler can call the dog back to heel). The handler **MUST NOT** pass by the right side of the jump until after the dog returns to heel. So don't pass by the jump until you've collected your dog back at your side....you should both pass by the side of the jump together. That's all there is to it!



**Tallmadge Kennels  
Bed & Biscuit**  
In Home Dog Boarding

**Sally Leary**  
Breeder of AKC Champion Labradors

413-967-6569  
[www.Tallmadgelabs.com](http://www.Tallmadgelabs.com)

Group Stays – Two Sides to the Coin

Most people know the basics of training for the group stay exercises at the Novice level....the dog holds a sit position for one minute and a down position for three minutes with the handler facing the dog on the opposite side of the ring. You practice setting up, leaving the dog, rewarding for staying, and also practice returning to heel. For most handlers, that's where it ends....they practice the right way to do it when everything goes as planned. There's another side to teaching stays.....teaching your dog NOT to break! It may sound silly, but your dog not only needs to know what to do, but he also needs to know what NOT to do. Practice having someone else create distractions that DO cause your dog to break the stay. Stand about six feet from your dog and EXPECT him to break the stay, and when he does just calmly reposition the dog back in the stay position using your hands and without saying anything. When your dog is back in the stay position, SMILE at him and say "good" or "yes", and have your helper repeat the distractions that caused him to break. The dog will eventually learn that you're trying to trick him into breaking, and he's going to become defiant about not falling for your tricks and will hold the stay no matter what you try. THAT is the point where he has started to learn what the stay exercises are all about! Have FUN with it! It is not a "bad" thing if your dog breaks a stay in training.....let him be "wrong" so that he can figure out what is right.

Tip of the month: Ever find yourself in a conflict for the stay exercises, and quickly need to send in a substitute handler so that you can be in another ring at the same time? Practice it in training! Asking someone else to handle your dog in stays is something that should be practiced before you find yourself needing to do it at a trial. It's also a good way to start transitioning from Novice to Open level stays where you need to be out of sight.

**DATES TO REMEMBER**

- |           |                                    |
|-----------|------------------------------------|
| April 21  | LRCPV Annual Meeting, Suffield CT  |
| May 6     | LRCPV Meeting, Holyoke MA          |
| May 11-12 | LRCPV Specialty, Westfield MA      |
| June 3    | LRCPV meeting                      |
| August    | LRCPV Rally Fun Match, Suffield CT |
| Sept      | LRCPV Well Dog Clinic, Suffield CT |

**LRCPV MAY MEETING**

The May Business Meeting will be held on Sunday, May 6th at 80 Jarvis in Holyoke MA. Dinner will be available in the meeting room. The primary business at this meeting will be to finalize plans for the Specialty.

**SPECIAL THANKS TO OUR CONTRIBUTORS**

**Laura Bauver, Editor**  
**Hazel Holman, MDV**  
**Ann Huntington, DVM**  
**Danette Smith**

We welcome articles from all members for possible publication and questions for the Ask the Vet column.

Please submit by the 10<sup>th</sup> of the month to:  
 LRCPV Newsletter Laura K Bauver, Editor  
 43 South Lane, Granville MA 01034  
 cassisclot@yahoo.com



## LRCPV SPECIALTY

The annual Specialty will be held at the Westfield Fairgrounds on Friday, May 11th and Saturday, May 12th.

Volunteers are needed to assist in both Conformation and Obedience/Rally rings, to assist with the sale of raffle tickets, and sale of logo items...and to be available to fill in as needed.

Please contact:

Lois Engle

[showdogs@charter.net](mailto:showdogs@charter.net) or 413-323-7672 to volunteer to assist in the Conformation Ring

Annmarie Wilson

[annmarie@wilannlabradors.com](mailto:annmarie@wilannlabradors.com) 860-668-4908 to assist in the Obedience/Rally Ring

Kelly Rome

[calsamlabs@cox.net](mailto:calsamlabs@cox.net) if you or anyone you know is interested in being a vendor. The "fee" for a booth is contribution of a raffle item valued at a minimum of \$25 (one for each day you plan to set up your booth.)

Lauren Simpson

[laughinlab@comcast.net](mailto:laughinlab@comcast.net) or 417-734-7613  
All members are asked to contribute at least one item for the raffle.

Please plan to attend the Specialty and help in making the weekend a success!

## LRCPV BUSINESS MEETING

Sunday, May 6, 2012

80 Jarvis  
Holyoke MA

Dinner service will be  
available in the meeting  
room at 4:30 pm

Business Meeting  
6:00 pm

On the Agenda:

Finalizing plans for the  
Specialty, May 11<sup>th</sup> and 12<sup>th</sup>  
at Westfield Fairgrounds  
Russellville Road  
Westfield MA

All members are  
encouraged to attend!

If you cannot attend the  
Specialty on Friday  
morning, you may bring  
your raffle donations to the  
meeting