



June 2011



The Labrador Retriever Club of the Pioneer Valley, Inc.
Kelly Rome
5 Fawn Drive
Granby, CT 06035



LRCPV Member

WWW.LRCPV.ORG



The Labrador Retriever Club of the Pioneer Valley, Inc

June 2011

Officers and Directors 2011-2012

President Lois Engel
Vice President Gretchen Boss
Corresponding Secretary Judy Dorsett

4 Brittany Road, South Hadley, MA 01075

Email: judedors@aol.com

Recording Secretary Laura Bauver
Treasurer Laura Lafreniere

Directors:

Ann Burns, Tina Stone, Lauren Simpson, and Annmarie Wilson

Newsletter Staff

Editor Kelly Rome
Newsletter Committee Ann Huntington, Jan Lemire

Webmaster Annmarie Wilson
Email: Annmarie@wilannlabradors.com

The Newsletter is e-mailed to all LRCPV members at no fee. Newsletter subscriptions to non-members are \$15.00 per year. Club activity or committee reports, editorial, or general articles of interest to Labrador Retriever owners are always welcome. Any opinions or reports contained herein are those of the authors and do not necessarily reflect the opinion of the membership, the Board of Directors or the editors. Please address all correspondence to the Editor at the address below:

Newsletter Editor, LRCPV

Kelly Rome, 5 Fawn Drive, Granby CT 06035

Email: Calsamlabs@cox.net

The purpose of this Newsletter is to give members an overview of Club activities and to keep them informed on breed related issues. The Newsletter is published 10 times per year, or whenever the editor can manage it.

Contacting the LRCPV

www.lrcpv.org

Email: LRCPV@aol.com LRCPVRESCUE@aol.com

Inside this issue

Meeting Notice	2
Litters	2
Nominations	2
Up Coming Events	3
Meeting Minutes	4-5
Club Awards	6-8
Sporting Group Match	9
Cornell Lyme Test	10-13
New AKC Programs	13-14



Newsletter Submissions

The Newsletter also welcomes articles for possible publication.

Please send submissions to

LRCPV Newsletter

5 Fawn Drive, Granby, CT 06035

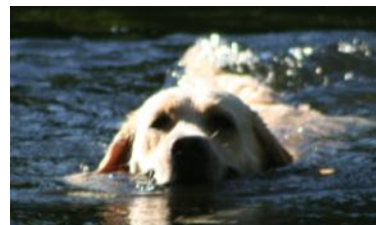
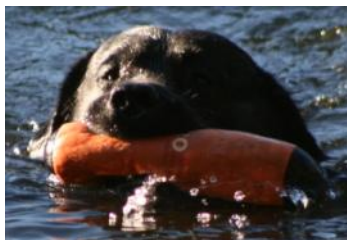
E-mail Calsamlabs@cox.net

Deadline by the 10th of each month.

Labrador Retriever Club of the Pioneer Valley, Inc.

Meeting Notice - (no meeting just fun!)

July 10, 2011: Labrador Fun Swim 1:00PM



From 91 north or south, take exit #16 and follow Route 202 North through Holyoke and across the Connecticut River on the Mueller Bridge. On the South Hadley side of the bridge, you will encounter a rotary. Go 3/4 of the way around (4th exit off of rotary is North Main Street). Proceed up North Main St. for a little bit and take your second left - River Road. Go 1.1 mile to 321 River Road and park on the right side of the road where marked. On the left side of the street there are two paths leading to the river. We will be at the bottom of the steeper one (the left hand one). Bring a chair, snacks, drinks, bumpers, bug spray, suntan lotion, and a dog, of course.

Puppies Available

Note: In order to list a litter you must be in good standing with the club and work at a minimum of 2 club events during the current calendar year. Members who are unable to meet this requirement may list a litter after paying a \$50 litter listing fee. Regardless, you must submit proof of eye, hip and elbow clearances to the Treasurer before your litter can be listed in the newsletter or on the website.

There are no litters listed at this time.

For up-to-date information on puppies & adult dogs visit
WWW.LRCPV.ORG

Up Coming Club Events

June 2011

June 5, 2011: L.R.C.P.V Monthly Meeting, 6:00 Suffield Veterinary Hospital

L.R.C.P.V. Supported Entry, Shawangunk Kennel Club, New Paltz, NY

July 2011

Labrador Fun Swim - details coming.

L.R.C.P.V. Supported Entry, Holyoke Kennel Club

August 2011

**Rally Fun Match: Suffield Veterinary Hospital
577 East Street South, Suffield, CT**

September 2011

Health Clinic at Suffield Veterinary Hospital

Labrador Demo and Education, Big E Fairgrounds

L.R.C.P.V. Supported Entry, Carroll County Kennel Club



Tick removal, From unknown sender

Spring will be here soon and the ticks will soon be showing their heads. Here is a good way to get them off you, your children, or your pets. Give it a try.

A School Nurse has written the info below -- good enough to share -- And it really works!

I had a pediatrician tell me what she believes is the best way to remove a tick. This is great, because it works in those places where it's some times difficult to get to with tweezers: between toes, in the middle of a head full of dark hair, etc.

Apply a glob of liquid soap to a cotton ball. Cover the tick with the soap-soaked cotton ball and swab it for a few seconds (15-20), the tick will come out on its own and be stuck to the cotton ball when you lift it away. This technique has worked every time I've used it (and that was frequently, and it's much less traumatic for the patient and easier for me.

Unless someone is allergic to soap, I can't see that this would be damaging in any way. I even had my doctor's wife call me for advice because she had one stuck to her back and she couldn't reach it with tweezers. She used this method and immediately called me back to say, "It worked!"

Please pass on Everyone needs this helpful hint.



Business Meeting
 Sunday, May 1, 2011
 Suffield Veterinary Hospital, Suffield CT

Meeting was called to order by President Lois Engel at 6:05pm

Members in Attendance: Lois Engel, Gretchen Boss, Laura Lafreniere, Laura Bauver, Judi Dorsett, Cindy Clement, Hazel Holman, Ann Huntington, Lauren Simpson, Cindy Stone, Tina Stone, Annmarie Wilson

Prospective Member: Michele Johnson

Treasurer's Report*:

Laura Lafreniere presented information on the Club accounts. Bills and bank statements are reconciled. We have two CDs: one recently renewed and one will renew in June 2011. Discussion followed concerning cash flow including anticipated income and expense for the Specialty being help this month. Laura L will apply for a credit card in the club's name.

Specialty:

Trophies:

Gretchen Boss will order the plaques that are needed for some of our perpetual trophies. It was discussed that in the future anyone who donates a perpetual trophy would also be expected to donate the first plaque to go with it. Members agreed by general consent.

Judges:

Members who host judges will pay the bill for the meal(s) and be reimbursed for the judges' portion following the show.

Ann Huntington will provide two vehicles for use in driving judges.

LRCPV will only pay for the hotel expenses for required nights. Any additional nights will be the responsibility of the respective judge(s).

Breed judges will be transported and hosted by Gretchen Boss throughout their stay.

Ann Huntington will be responsible for airport transport of the Obedience judges.

Registrations:

Ann Huntington reported on the registrations

	<u>2011</u>	<u>2010</u>	<u>2009</u>
Friday	312	319	398
Saturday	280	347	427

Discussion followed concerning possible causes for the decrease:

Location

Judges

One judge is not known in this area

One judge has business relationships with several club members and other usual participants as co-owner or handler

It was suggested that participants each receive a brief survey concerning various aspects of the event (location, judges, etc). To encourage timely responses all respondents' names will be entered in a drawing for a gift

Tents:

Tents will be delivered and set up on Thursday. Lois Engel will be at the fairgrounds at 9:30am to supervise set up.

We will have the large Show and Obedience tents and a raffle/logo tent.

Meeting Minutes Continued

Stewards:

Annmarie Wilson reported that she needs additional rally and obedience stewards

Lois Engel reported that additional conformation stewards would also be welcome

Logo:

Lauren Simpson reported that she had recently emailed members who owed the club for logo items. She is receiving a good response to the reminder

Lauren will handle logo sales at the Specialty on Friday. Gretchen Boss will be in charge on Saturday

Items will be stored securely on-site over night

Photography:

Photographer will select site for formal pictures. Most likely either near the brown barn or food concession area

Lois will lend the club lattice to be used for backdrop.

Raffles:

Drawing for OFA will be a separate drawing from other items

Tickets will be \$5 each or 5/\$20

Gretchen will bring a jar for these raffle tickets

All other items

Tickets \$1 each 7/\$5 16/\$10 40/\$20

Drawings will be Saturday at lunchtime

Judges' Gifts:

Sandy Masek reported she has logo tote bags for each judge. She will put a logo travel mug, a LRCPV leash, and candy in each bag.

Sandy will also prepare hospitality baskets and deliver them to the judges' hotel. Baskets will include wine, cheese, crackers, etc.

Plants:

Nine plants will be purchased to decorate the area.

Cost is \$25/plant

One will be given as a raffle prize and members will be allowed to purchase the others for \$15 each.

Friday after show buffet:

Sandy is ordering food for the Friday buffet

An email will go out requesting that all members bring a dessert item

Membership:

Corresponding Secretary Judi Dorsett gave the second reading of a membership application for Michele Johnson. Michele was unanimously accepted into membership.

Adjournment:

Motion to adjourn was made by Annmarie Wilson, seconded by Ann Huntington. The meeting adjourned at 7:55pm

Laura K Bauver, Recording Secretary

* Copies of the Treasurer's Report and Attendance List are attached to the official copy of these minutes.

Rosettes for Club Awards for titles earned in 2010:

<u>Dog's name</u>	<u>Award</u>
Andromeda of Split Rock, CGC Laura Bauver	1. CGC 2. Breeder
Breckin Pot of Gold Dakota, CGC Susan Blouin, Gretchen Boss	1. CGC 2. Breeder
New Watch's Sierra Serenity Song, CGC Merri Mahoney	1. CGC 2. Breeder
New Watch's Push My Buttons, CGC Merri Mahoney	1. CGC 2. Breeder
Big Bucks Bentley CGC, Therapy Dog Susan Blouin	1. CGC 2. Therapy Dog
West Hill Do-Si-Do My Darla, CGC, Therapy Dog Laura Lafreniere	1. CGC, 2. Therapy Dog , 3. Breeder
Willcare's Canterbury Tale Andrea Newman	1. Most breed points (9 pts)
CH Dune Dancer's Birchill Data, RN Ann Huntington	1. CH
CH Breckin Hyspire Promiscuous Girl, WC Gretchen Boss	1. CH 2. WC 3. Breeder
CH Ridge View Buddy Holly UD, RE Deb Brunell	1. UD (192 ½) 2. High Obedience Score
Wilann's Candy Cane, CGC, RN Annmarie Wilson	1. RN (99) 2. Breeder 3. Highest Rally Score
Silverado's Miracles Can Happen, RA Cindy and Tina Stone	1. RN 2. RA Lauren Simpson 3. Breeder
Tootsieroll Wilson Brownstone, CD, CGC, RE Annmarie Wilson	1. RA 2. RE



Save the date!

October 9—16, 2011

**The Labrador Retriever Club, Inc. 2011
National Specialty Event Week
Brooklyn Fairgrounds, Brooklyn, Connecticut & the James Dean
property, Woodstock, Connecticut**

LABRADOR RETRIEVER CLUB OF THE PIONEER VALLEY
2010
DOG WORLD AWARD

This Award is given to the L.R.C.P.V. member who helps in Club activities and functions and is basically there whenever needed.

Laura Lafreniere

Long-time member Laura Lafreniere is one of the strongest pillars of the L.R.C.P.V. and a great ambassador for our breed. She is at almost all of our meetings and events, doing whatever is asked of her with a smile.

Laura has served in most positions of responsibility for our club, and currently sits in the difficult position of treasurer. 2010 was a particularly trying year to be club treasurer, as she scrambled to gather years of financial records, deal with the accountant, and file the necessary papers to make sure we are in compliance with the IRS.

Where would the L.R.C.P.V. be without Laura? She organizes our parties and dinners like this one. For our specialty she makes arrangements for the fairgrounds, hotel rooms, caterers, flowers, set-up, break-down...and just about everything else. She keeps track of our members and new applicants, and is the phone contact for many people seeking information on Labrador retriever rescue.

In addition, Laura is a great mentor for those new to Labradors. As one member put it, "Laura encourages the discouraged." For all these reasons we are proud to give Laura Lafreniere the 2010 Dog World Award.

LABRADOR RETRIEVER CLUB OF THE PIONEER VALLEY
2010
GOOD SPORTSMANSHIP AWARD

This Award is given to the member that shows class in both the assistance given the Club, its members & others as well as their sportsmanship in competition with their Labradors.

Lauren Simpson

Lauren Simpson has been an active and caring member of the LRCPV for over 15 years, both as a committed leader and innovator, and as a willing helper and assistant.

She is outstanding at representing our club in the community-at-large by organizing the Big E presentations. This is our most public event, and through it Lauren fulfills a club goal of promoting these wonderful dogs and responsible ownership.

Logo items. What a complicated and difficult job it is to select, offer to our members, order, deliver and collect payment for the beautiful apparel so many of us are wearing tonight! Thank you, Lauren, from all of us. We know we don't make it easy for you!

And then there are the less obvious ways that Lauren makes our club better. She willingly helps at most events, provides gift baskets whenever asked, happily takes dogs into the ring for others, and is friendly and welcoming to new members. For these reasons, and because we admire and value her as a friend and as a member, we are pleased to present Lauren Simpson the 2010 Good Sportsmanship Award.

2010 Member appreciation awards

These awards are given to members that have helped out at multiple club events and served as officers, directors or on active committees. Without the help of their almost endless volunteer hours, our club wouldn't have the reputation it holds for hosting well-run and welcoming shows, matches and clinics. Thank you to:

Laura Bauver

Susan & Ray Blouin

Gretchen Boss

Susan Brownell

Deb Brunell

Ann Burns

Fran Cain

Cindy Clement

Haley Clement

Laura Cook

Judi Dorsett

Lois Engel

Hazel Holman

Ann Huntington

Kristen Hurwitz-Brockett

Laura Lafreniere

Jan Lemire

Sandy Masek

Andrea Newman

Kelly Rome

Lauren Simpson

Cindy Stone

Tina Stone

Kenin Strout

Thank You!!!



AKC Sanctioned Match

Open to Sporting Breeds Only

Saturday, July 16, 2011

**Silver City Canine Training Center
480 John Hancock Road, Taunton, MA**

Puppy Classes 3-6, 6-9 & 9-12 months, Bred By Exhibitor, Open & Junior Showmanship
Best Puppy in Match & Best Adult in Match

Conformation Judges:

**Marla Doheny- Pointers, Retrievers, English Cockers, All Setters
Paul Willhauck –balance of breeds.**

Entries taken 9:00 a.m. until start of judging. Judging starts at 12:00 a.m.
Entry Fee: \$10.00 Second entry \$5.00

**Ribbons, trophies, air conditioning and lots of fun! Lunch will be available at a nominal cost.
Note: No flexi-leads allowed on premises or outside facility.**

AKC Sanctioned Obedience & Rally Match - Sporting Breeds Only

**Obedience Judge: Esther Zimmerman
Rally Judge:TBA**

Rally will begin at 11:00 a.m followed by Obedience classes
Entries taken 9:00 a.m. until start of judging. Judging starts at 11:00 a.m.
Rally- Novice A & B
Obedience - Novice through Utility A & B, Graduate Novice & Graduate Open
Entry Fee: \$10.00 Second entry \$5.00

AKC Canine Good Citizen Test

Open to all breeds Entry Fee: \$15.00
Entries 9-10:00 Start time 10:00 a.m.

Add'l Information Contact Evaluator: Gary
Burdick gary@burdicklabradors.com

Microchip Clinic

AKC Canine Animal Recovery

12:00 Noon First Come First Served Basis
\$40.00 includes enrollment
Open to all breeds

For more info contact Match Chair, Christine Calcinari belhaven.nh@comcast.net
www.nesportinggroup.com



Cornell University
College of Veterinary Medicine

Animal Health Diagnostic Center

Lyme Disease Multiplex Testing for Dogs

Background on Lyme disease and Lyme diagnostics

Lyme disease is induced by the spirochete *B. burgdorferi*. The bacteria are transmitted to the host by infected ticks. Typical clinical signs in dogs are fever, acute arthritis, arthralgia and lameness^{1,2}. Clinical signs of lameness often develop 2-5 months after exposure. *B. burgdorferi* can persist for at least one year in clinically recovered dogs². Serum antibodies to antigens of *B. burgdorferi* are commonly used to identify dogs that were exposed to the pathogen and are at risk of developing Lyme disease²⁻⁵. Current ELISA based diagnostic tests identify antibodies as early as 4-6 weeks after exposure. High antibody levels were found in serum of experimentally infected dogs for at least 17 months².

How does the new multiplex test work?

The new Lyme multiplex assay was developed at the Animal Health Diagnostic Center at Cornell University. It detects antibodies to three *B. burgdorferi* antigens in canine serum. The multiplex test is based on fluorescent bead technology that allows the simultaneous measurement of antibodies to different *B. burgdorferi* antigens in a single sample^{6,7}.

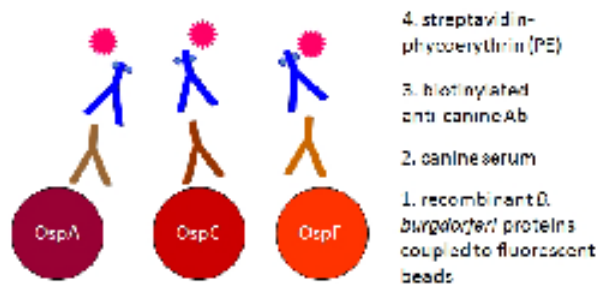
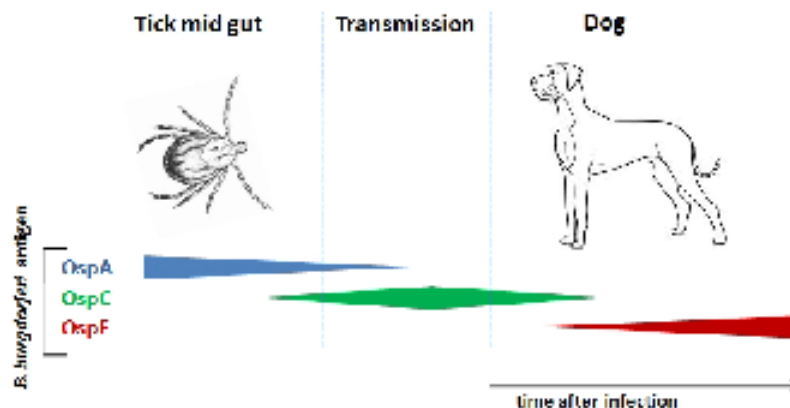


Figure 1: Lyme multiplex assay to detect antibodies to *B. burgdorferi* in canine serum. Osp-antigen specific antibodies in serum bind to the multiplex beads and are detected by a fluorescent conjugate. The assay values are expressed as median fluorescent intensities (MFI).

Which *B. burgdorferi* antigens are used and how is the test interpreted?

The new multiplex test is based on three different outer surface proteins (Osp) of *B. burgdorferi*. Various research studies have shown that Osp antigen expression on the bacterial surface changes in response to tick feeding and after infection of a warm-blooded host, such as dogs, horses, or humans. In response to infection, dogs develop antibodies to these Osp proteins and testing for antibodies to specific Osp antigens can assist in the diagnosis of Lyme infection and disease.

Figure 2: *B. burgdorferi* regulates its outer surface protein expression depending on its environment. In the tick gut, OspA is expressed. During tick feeding, the bacteria leave the tick's mid gut and start to express OspC on their surface. OspC expression is maintained during early infection. In response to the different environment in the dog's body, the bacteria again change their surface expression – OspC disappears and OspF is expressed in the chronic infection stage.



Interpretation of Lyme multiplex results⁶:

1. **OspA** – positive values for antibodies to OspA are typically observed in vaccinated dogs. OspA is expressed while *B. burgdorferi* persists in the tick mid-gut and also while the bacteria are cultured in-vitro. During infection of mammalian hosts the bacteria down-regulate OspA. Thus, antibodies to OspA are almost undetectable after natural infection in non-vaccinated dogs.
2. **OspC** - has been found to be a valuable indicator for **early infection** with *B. burgdorferi*. Antibodies to OspC can be detected 2-3 weeks after infection *B. burgdorferi*. Antibodies to OspC decline after 3-5 months of infection.
3. **OspF** – is an indicator of **chronic infection**. Antibodies to OspF are developed 6-8 weeks after infection and persist afterwards.

What are the advantages of the new multiplex test?

The new Lyme disease test at the Animal Health Diagnostic Center at Cornell University combines the results previously obtained by ELISA and Western blotting. The advantages of the new multiplex test compared to the previous procedure are:

- increased specificity and sensitivity
- quantitative measurement of individual antigens
- improved assay results distinguishing between
 - (1) vaccination and infection
 - (2) early and chronic stages of infection

The test result provides advanced information beyond any of the current Lyme testing methods. The testing allows a better definition of the dog's current infection status and assists in determining treatment options. The infection status can be determined in vaccinated dogs.

Special considerations for vaccinated dogs

The new Lyme multiplex assay can distinguish between vaccinated and infected dogs. All currently available vaccines for dogs induce antibodies to OspA. Thus, the results on antibodies to OspA will determine the dog's vaccination status. However, some of the available vaccines also induce antibodies to other Osp antigens. To provide our clients with the best interpretation for each animal, we need information on the vaccine used. Please include the name of the vaccine and when the dog was last vaccinated on the accession form when a sample of a vaccinated dog is submitted for testing.

How can the multiplex test be compared to other serological Lyme assays?

Researchers at the Animal Health Diagnostic Center at Cornell University have compared the current ELISA/Western blot procedure and the commonly used C6 assays with the new multiplex test for Lyme disease. Multiplex assay and C6 results highly agreed on the identification of infected dogs. The multiplex assay provided additional information and also determined the infection stage of infected animals. The table below gives an overview about the properties of the different assays.

Table 1: Comparison of serological Lyme assays for dogs.

	Sensitivity/ Specificity	Quantitative result	Distinguishes vaccination from infection	Identification of early versus chronic infection
ELISA (Cornell)	Good	Yes	No	No
WB (Cornell)	Good	No	Yes	No
C6 Snap test	Good	No	Infection only	No
C6-ELISA	Good	No	Infection only	No
Multiplex test Cornell)	Improved	Yes	Yes	Yes

Sample submission

For detection of antibodies to *B. burgdorferi* in dogs, 2 ml of serum needs to be submitted. Serum should be collected in a red top blood tube. The entire red blood tube or isolated serum should be shipped by overnight shipment on an ice pack. For submission forms and shipping address go to the Animal Health Diagnostic Center website (<http://ahdc.vet.cornell.edu>). The fee for the assay is \$36 per sample.

Samples are tested three days a week and results are available 2-3 days after the sample arrives at the laboratory. Consultation is available on the new testing platform by calling the Serology/Immunology laboratory at the Animal Health Diagnostic Center at Cornell University 607.253.3900.

References

- 1 Levy, S.A., Magnarelli, L.A., 1992. Relationship between development of antibodies to *Borrelia burgdorferi* in dogs and the subsequent development of limb/joint borreliosis. *J. Am. Vet. Med. Assoc.* 200, 344-347.
- 2 Appel, M.J.G., Allan, S., Jacobson, R.H., Lauderdale, T.L., Chang, Y.-F., Shin, S.J., Thomford, J.W., Todhunter, R.J., Summers, B.A., 1993. Experimental lyme disease in dogs produces arthritis and persistent infection. *J. Infect. Dis.* 167, 651-664.
- 3 Jacobson, R.H., Chang, Y.F., Shin, S.J., 1996. Lyme disease: laboratory diagnosis of infected and vaccinated symptomatic dogs. *Semin. Vet. Med. Surg. (Small Anim.)* 11, 172-182.
- 4 Wittenbrink, M.M., Failing, K., Krauss, H., 1996. Enzyme-linked immunosorbent assay and immunoblot analysis for detection of antibodies to *Borrelia burgdorferi* in dogs. The impact of serum absorption with homologous and heterologous bacteria. *Vet. Microbiol.* 48, 257-268.
- 5 Guerra, M.A., Walker, E.D., Kitron, U., 2000. Quantitative approach for the serodiagnosis of canine lyme disease by the immunoblot procedure. *J. Clin. Microbiol.* 38, 2628-2632.
- 6 Wagner B, Freer H, Rollins H, Erb HN. 2011. A fluorescent bead-based multiplex assay for the simultaneous detection of antibodies to *B. burgdorferi* outer surface proteins in canine serum. *Vet. Immunol. Immunopathol.*, 140: 190-198.
- 7 Wagner B, Freer H, Rollins A, Erb HN, Lu Z, Gröhn Y. Development of a multiplex assay for detection of antibodies to *Borrelia burgdorferi* in horses and its validation using Bayesian and conventional statistical methods. Submitted for publication.

New Exhibitor Mentoring Program

Program Introduction

The AKC New Exhibitor Mentoring Program is designed to help recent registrants of AKC dogs or those thinking about getting an AKC registered dog meet experienced dog fanciers and breeders to assist them in getting started. These seasoned handlers and exhibitors will share their expertise with those expressing an interest in entering the exciting world of AKC competition.

How it works:

When you submit a [signed application](#) we will send you a list of qualified mentors located in your state. These mentors have the experience necessary to get you started regardless of what breed you have. They will provide you with such tools as:

- Basic Dog Show/Event Etiquette
- Dog Show/Event Judging Procedures
- Understanding Common Show/Event Terms
- Types of Events
- How to Fill Out An Entry Form
- How to join a dog club in your area

Mentoring has a long history with AKC and relationships developed this way have often lasted lifetimes. Who knows, perhaps some day it will come full circle and you will be mentoring a new exhibitor in the years to come!

AKC Chairman's Report

June 2011



– AKC Introduces New Therapy Dog Title –

I am pleased to announce an exciting new title open to all AKC dogs. The AKC Therapy Dog title, or "THD," will launch June 27th as an official AKC suffix title and will reward dogs and their owners that have provided ongoing community service to help improve the well being of others.

Currently, it is estimated there are 50,000 certified and active therapy dogs in the United States. Volunteerism has exploded over the past decade, especially those with dog and owner teams working in schools, hospitals, nursing homes, and at natural disasters.

As you know, the AKC annually recognizes an outstanding Therapy Dog as part of the annual AKC Humane Fund Awards for Canine Excellence (ACE). We receive so many great nominations that we know there are many more dogs out there that deserve recognition. We have also received many requests from the fancy to award titles to therapy dogs as a way to recognize the "great work their dogs do." Additionally, earning a THD title builds on the skills taught in the AKC S.T.A.R. Puppy and Canine Good Citizen programs, which create a sound and friendly temperament needed by a successful therapy dog.

The AKC will not certify therapy dogs. Instead, we're working with therapy dog certification organizations to recognize the work done by therapy teams. The certification organizations are the experts in this area and their efforts should be acknowledged and appreciated.

The title will be open to all AKC dogs that have completed a series of criteria. To qualify, dogs must be certified by a participating therapy dog certification organization and have performed a minimum of 50 community service visits.

To obtain a title an owner must complete an application along with evidence of documented visits. Application forms are available on the website at www.akc.org/akctherapydog. The program will accept documentation going back to January 1, 2000.

If your dog qualifies we encourage you to apply for the title. For more information visit www.akc.org/akctherapydog or email akctherapydog@akc.org.

AKC Open Show - Pilot Program

The AKC is piloting a new program called an "Open Show". It is an AKC sanctioned conformation event at which Championship points are **not** earned. The Open Shows are events at which dog clubs, judges, stewards, and exhibitors gain experience for licensed events.

Classes are:

4-6 Month 6- 9 Month 9-12 Month Open

And classes may be divided by gender.

All-Breed clubs may offer classes for all registerable breeds and varieties and for purebred dogs of any breed eligible for entry in the Miscellaneous Class and all FSS recordable breeds. For more information see the June 2011 Gazette or the Secretary's Minutes on the AKC website.